

# An Evaluation Framework for Sensing the Tides, Riding the Waves, and Rippling the Impact of IPE

Karen J. Saewert, PhD, RN, CPHQ, CNE, ANEF  
Gerri Lamb, PhD, RN, FAAN



COLLABORATING ACROSS BORDERS V  
SEPTEMBER 29 – OCTOBER 2 2015 | ROANOKE, VIRGINIA USA

© 2015

**ASU** College of Nursing  
& Health Innovation  
ARIZONA STATE UNIVERSITY

## Acknowledgments



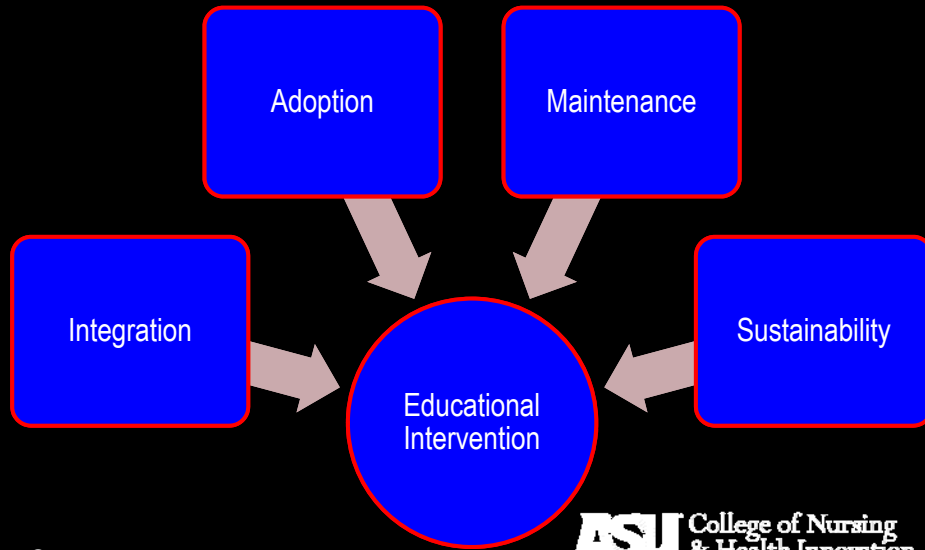
Integrated Interprofessional Primary Care Curriculum –  
Implementation and Evaluation:  
Teaching Early Adoption of Methods for  
Working in Interprofessional Networks  
(T.E.A.M. W.I.N.!)

ASU IRB Protocol #: 1304009052

© 2015

**ASU** College of Nursing  
& Health Innovation

## Macy Project Design

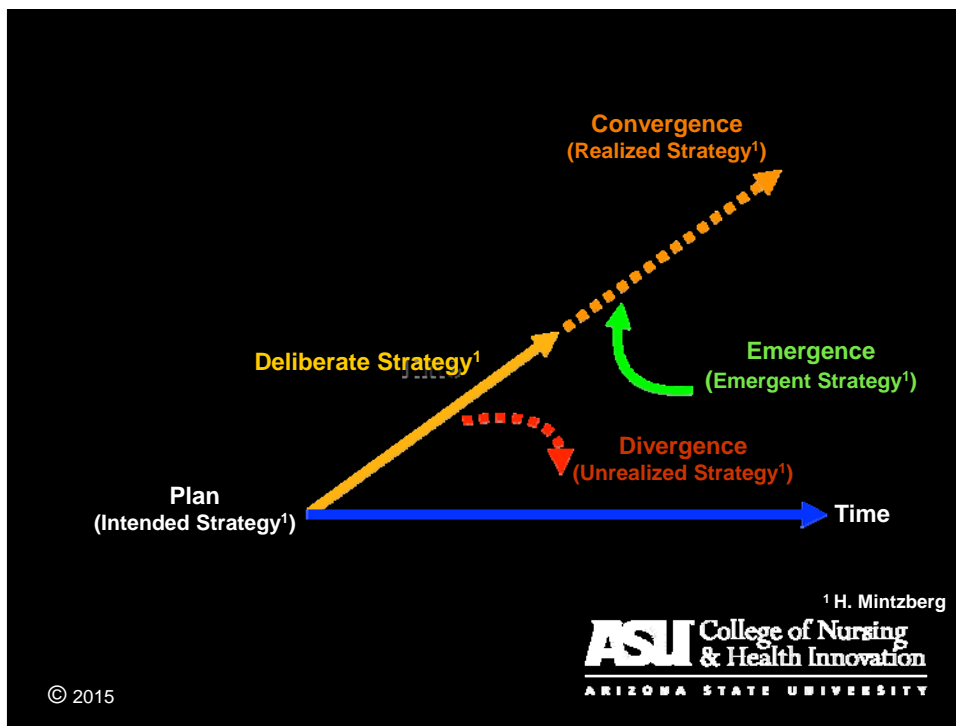


## Objectives

1. Describe developmental evaluation framework components used to navigate project accountabilities.
2. Discuss the complex, adaptive, and strategic learning outcomes associated with the use of a developmental evaluation framework.
3. Share project exemplars to contrast the project's intended and deliberate strategies with its unrealized, emergent, and realized strategies.

© 2015

**ASU** College of Nursing & Health Innovation



## Accountability Tensions

Why developmental evaluation exists...

Our program just started  
we have no idea where to go  
or how to evaluate



We'll start by predetermining  
the program's outcomes  
using very little evidence  
then over the years we'll  
judge you according to that



freshspectrum.com, Used with permission.

© 2015

**ASU** College of Nursing & Health Innovation

# Developmental Evaluation

Formative, Summative,  
is that all you evaluators  
got?



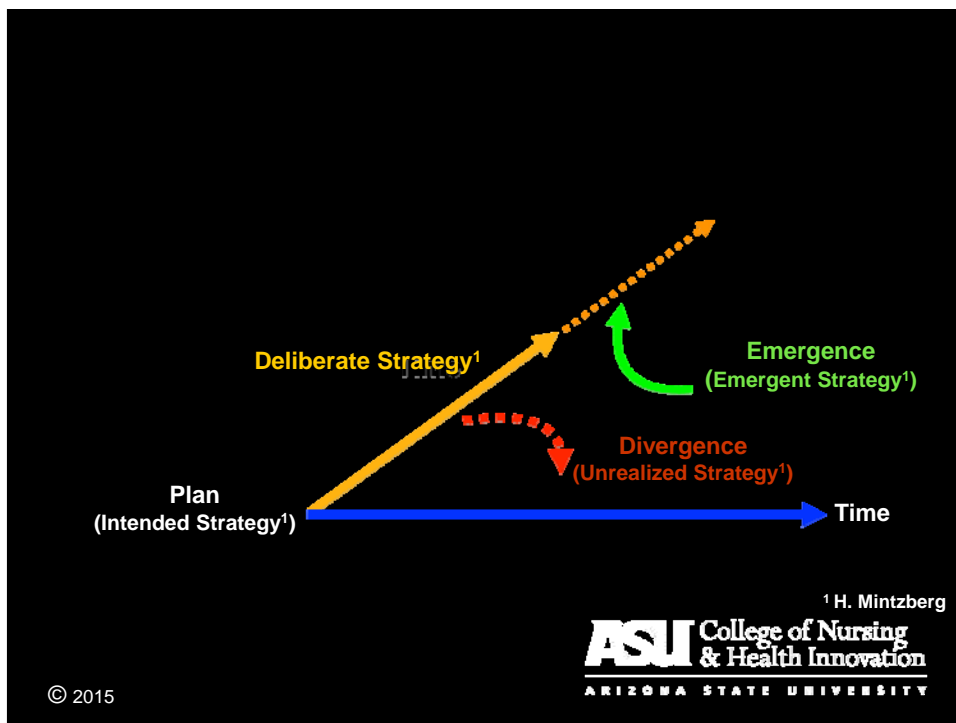
Umm, well, umm  
how about  
dev-el-op-men-tal



freshspectrum.com, Used with permission.

© 2015

**ASU** College of Nursing  
& Health Innovation



An Evaluation Framework for Sensing the Tides,  
Riding the Waves, and Rippling the Impact of  
IPE (CABV)  
(Saewert & Lamb, 2015)

## Embracing Vulnerabilities



freshspectrum.com, Used with permission.

**ASU** College of Nursing & Health Innovation

## “Failures” Are Important



freshspectrum.com, Used with permission.

**ASU** College of Nursing & Health Innovation

# Gathering Evidence

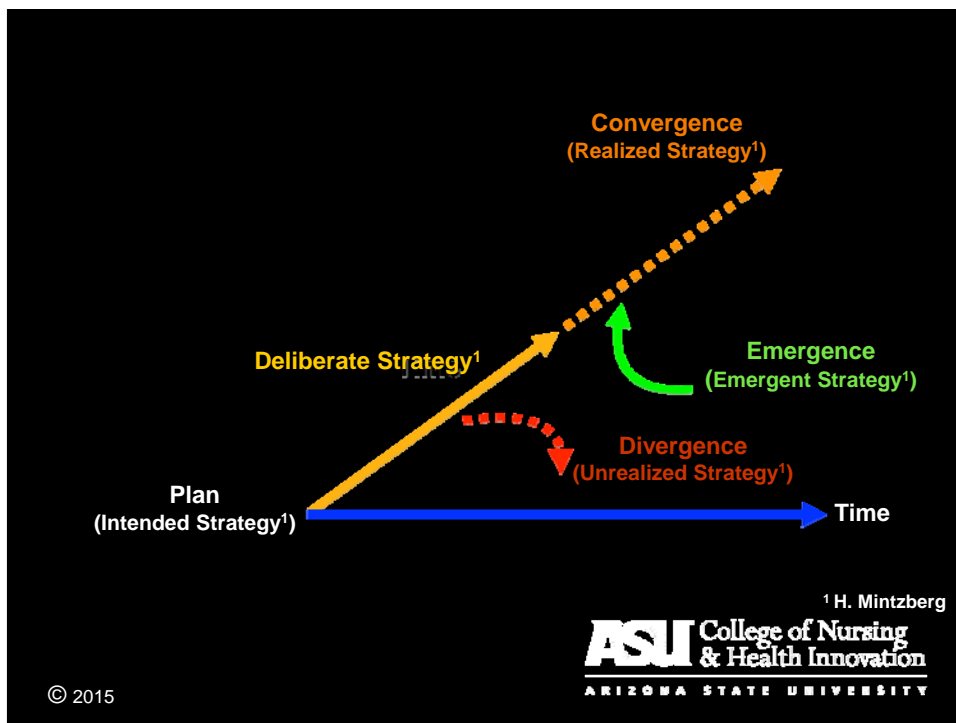
Our participants have been telling us valuable stories. We've learned so much about what we're doing right and where we can improve.

Did you get their emails? If so, we can survey them and get some real evidence.

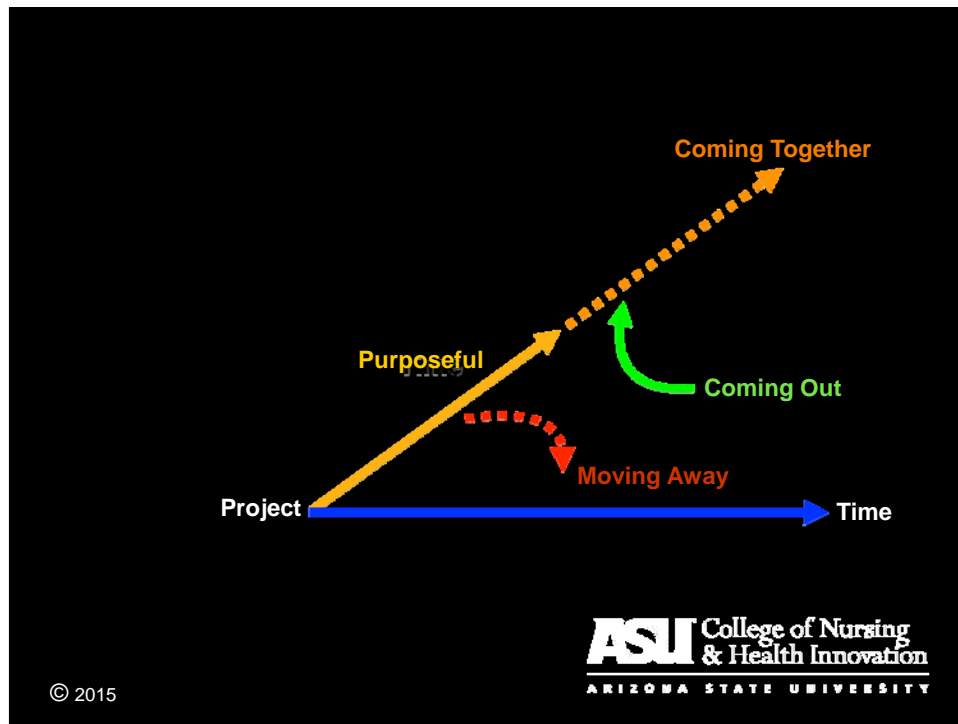


freshspectrum.com, Used with permission.

**ASU** College of Nursing & Health Innovation



An Evaluation Framework for Sensing the Tides, Riding the Waves, and Rippling the Impact of IPE (CABV) (Saewert & Lamb, 2015)



## Capacity Building

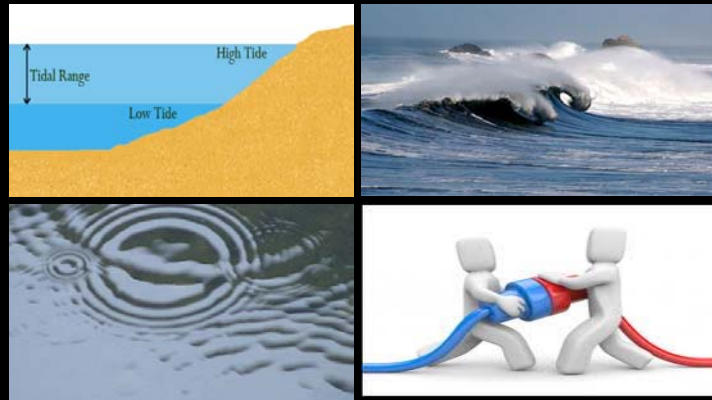
The selection of this framework enhanced our project's capacity to:

- sense
- ride
- capture
- catalyze
- impact

© 2015

ASU College of Nursing & Health Innovation

# Project Exemplars



© 2015

**ASU** College of Nursing  
& Health Innovation

“Everything you do ripples out to others.”

— American Proverb —

© 2015

An Evaluation Framework for Sensing the Tides,  
Riding the Waves, and Rippling the Impact of  
IPE (CABV)  
(Saewert & Lamb, 2015)





# Thank you!

We invite your questions and comments.

Karen J. Saewert: [Karen.Saewert@asu.edu](mailto:Karen.Saewert@asu.edu)

Gerri Lamb: [Gerri.Lamb@asu.edu](mailto:Gerri.Lamb@asu.edu)

© 2015

**ASU** College of Nursing  
& Health Innovation