

09.30.2015

# An Interdisciplinary Case Conference with Medicine, Pharmacy, Nursing, and Social Work Students Focused on Severe and Persistent Mental Illness

Abstract ID: 498



---

Chris Paxos, PharmD, BCPP, BCPS, CGP


Sara E. Dugan, PharmD, BCPP, BCPS

Susan P. Bruce, PharmD, BCPS



# Objectives

1. Identify the primary care and mental health needs of patients with serious mental illness.
2. Describe the case conference activity, including its development and format.
3. Discuss successes, challenges, and future opportunities for the case conference activity.



Patients with severe and  
persistent mental illness die,  
on average,                      earlier than  
the general population.



# Contributing Factors

Higher rates of  
general medical  
conditions

Higher rates  
of risk factors

Social  
vulnerability

Effects of  
mental illness

Effects of  
psychotropics

Competing  
demands

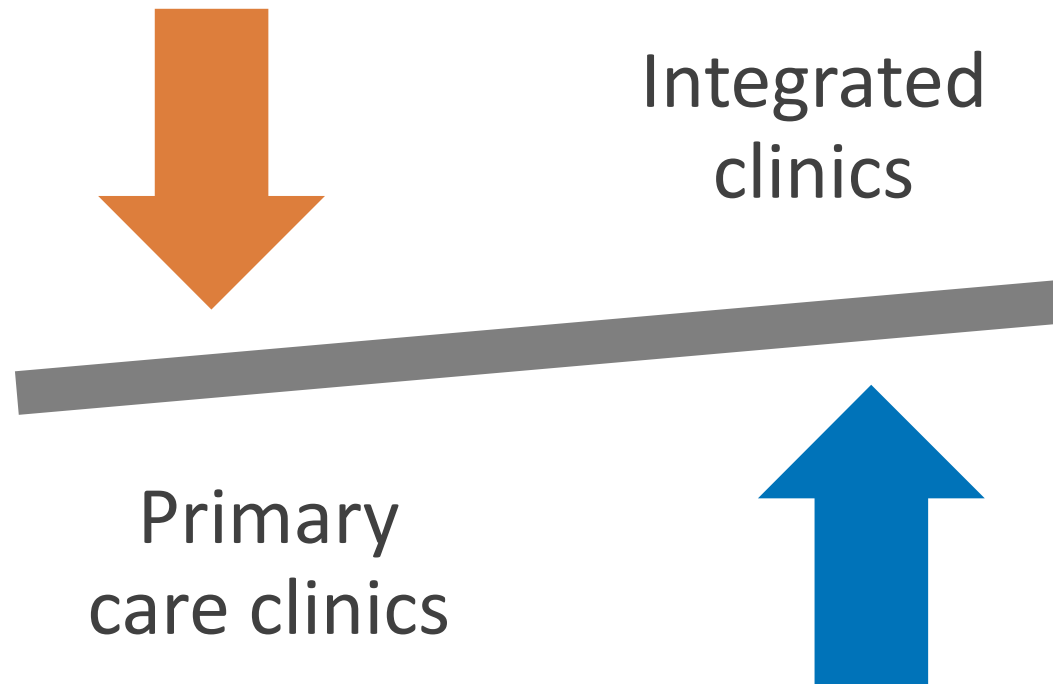
Stigma

Fragmentation  
of care

Lack of  
communication



# Integrated Care





# Location



- Community Support Services, Inc.
  - Community mental health clinic located in Akron, Ohio
  - Provides care annually to over 3,000 patients
  - Margaret Clark Morgan integrated primary care clinic
  - Local, independent closed-door pharmacy
  - On-site laboratory services



# Development

- Community Support Services, Inc.
  - Integrated primary care and mental health services
  - Provides fertile training ground for a variety of disciplines
- Interdisciplinary case conference
  - Created by Mark Munetz, MD in 2008
  - Interprofessional opportunity surrounding mental illness
  - Exposes students to an integrated care model







# Format

- Location
  - Community Support Services
- Faculty
  - Psychiatrist
  - Psychiatric pharmacist
  - Primary care physician
  - Primary care nurse practitioner
- Students
  - Medicine
  - Pharmacy
  - Nurse practitioner
  - Social work
- Groups
  - Five interprofessional groups
  - Up to 8 students per group
  - Each discipline represented
- Session
  - Mandatory
  - Offered 8 times per year
  - Length of 1.5 hours
- Assignments
  - Pre-session reading
  - Post-session reflection



# Faculty

- **Mark Munetz, MD**
  - Margaret Clark Morgan Endowed Chair and Professor
  - Department of Psychiatry, NEOMED
- **Chris Paxos, PharmD, BCPP, BCPS, CGP**
  - Associate Professor, Pharmacy Practice
  - Department of Pharmacy Practice, NEOMED
- **Kathleen Scott, PhD, APN, RN**
  - Nurse Practitioner, Community Support Services
  - Center for Community Health, University of Akron
- **Janice Spalding, MD**
  - Vice Chair for Education and Associate Professor
  - Department of Family and Community Medicine, NEOMED



# Objectives

1. Describe conditions that lead to premature mortality in patients with serious mental illness.
2. Explain the rationale for using various classes of medications to treat serious mental illness.
3. Identify the adverse metabolic effects of various classes of medications used to treat serious mental illness.
4. Describe why interprofessional teams are important in providing primary care to people with mental illness.



# Outline

1. Case presentation – 5 minutes
2. Didactic presentation – 25 minutes
  - Premature mortality
  - Antipsychotic medications
3. Case discussion – 45 minutes
  - Small group breakout
  - Large group discussion
  - Question and answer session
4. Conclusion – 15 minutes
  - Value of interprofessional care
  - Evaluations
  - Clinic tour



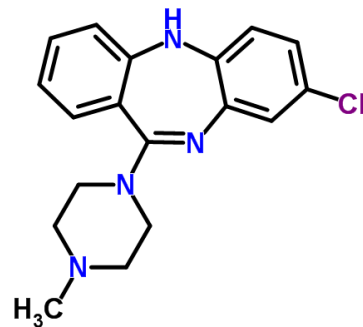
# Outline

1. **Case presentation – 5 minutes**
2. Didactic presentation – 25 minutes
  - Premature mortality
  - Antipsychotic medications
3. Case discussion – 45 minutes
  - Small group breakout
  - Large group discussion
  - Question and answer session
4. Conclusion – 15 minutes
  - Value of interprofessional care
  - Evaluations
  - Clinic tour



# Patient Case

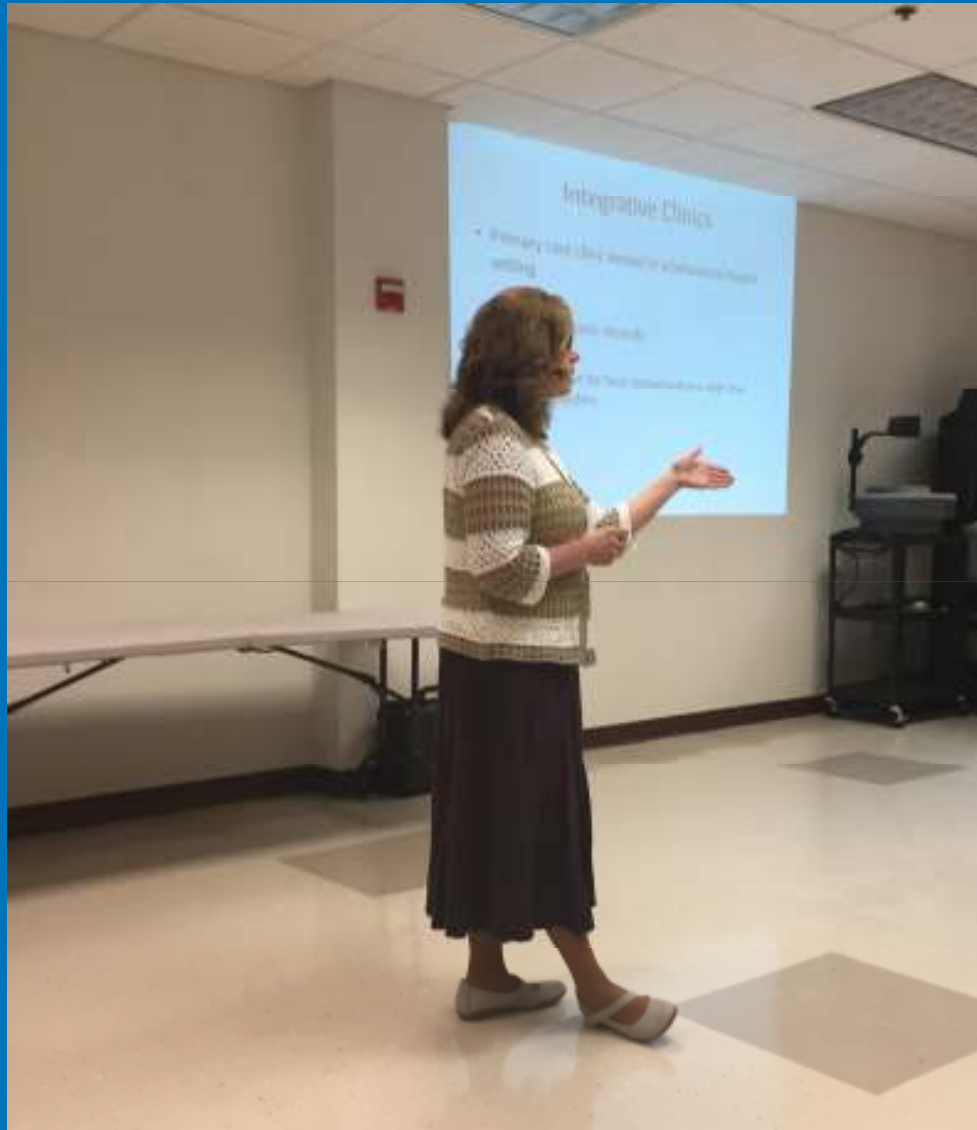
- “Mary Jones”
  - Thirty-two year old African American female
  - Schizophrenia since age 25
- Pharmacotherapy
  - Incomplete response to prior antipsychotic therapy
  - Robust response to clozapine therapy
  - Develops elements of the metabolic syndrome





# Outline

1. Case presentation – 5 minutes
2. **Didactic presentation – 25 minutes**
  - **Premature mortality**
  - **Antipsychotic medications**
3. Case discussion – 45 minutes
  - Small group breakout
  - Large group discussion
  - Question and answer session
4. Conclusion – 15 minutes
  - Value of interprofessional care
  - Evaluations
  - Clinic tour



Dr. Kathleen Scott, nurse practitioner, University of Akron





# Outline

1. Case presentation – 5 minutes
2. Didactic presentation – 25 minutes
  - Premature mortality
  - Antipsychotic medications
- 3. Case discussion – 45 minutes**
  - Small group breakout**
  - Large group discussion**
  - Question and answer session**
4. Conclusion – 15 minutes
  - Value of interprofessional care
  - Evaluations
  - Clinic tour



# Case Discussion

- Interprofessional groups
  - *What are the health concerns that need to be addressed with Mary?*
  - *What disciplines are needed to address Mary's healthcare concerns?*
  - *How can each discipline be involved in addressing her healthcare problems?*
  - *What plan would you hope to develop with Mary?*



Interprofessional team consisting of 2 medicine students, 2 pharmacy students, 1 nurse practitioner student, and 1 social work student.



# Outline

1. Case presentation – 5 minutes
2. Didactic presentation – 25 minutes
  - Premature mortality
  - Antipsychotic medications
3. Case discussion – 45 minutes
  - Small group breakout
  - Large group discussion
  - Question and answer session
4. **Conclusion – 15 minutes**
  - **Value of interprofessional care**
  - **Evaluations**
  - **Clinic tour**



# Evaluations

	Strongly Agree	Agree	Disagree	Strongly Disagree
Describe conditions that lead to premature mortality in patients with serious mental illness.	159	56	0	0
Explain the rationale for using various classes of medications to treat serious mental illness.	130	81	4	0
Identify the adverse metabolic effects of various classes of medications used to treat serious mental illness.	173	42	0	0
Describe why interprofessional teams are important in providing primary care to people with mental illness.	165	50	0	0



# Evaluations

- Narrative comments
  - *Working as a team to solve the case. It was very enlightening.*
  - *Case presentation format and group discussion.*
  - *Having it in a place where this interprofessional care is being conducted.*
  - *Learned how much an interprofessional group brings to the care of a psychiatric patient.*
  - *Having many disciplines present and learning how each contributes to the interprofessional team.*
  - *Multiple teaching modalities such as research article, anecdotes, didactics, and different perspectives of healthcare professionals.*
  - *I wasn't sure what to expect, but I think this would be good to have with our colleagues on our other rotations.*



# Evaluations

- Narrative comments
  - *Articles were redundant.*
  - *Maybe condense the lecture to allow for slightly more discussion.*
  - *I would consider having it at NEOMED in the future.*
  - *Scenario was very much (or seemed to be) geared toward medical professionals, which tended to drown out the role/need for social workers.*



# Challenges

- Facility
  - Scheduling
  - Room and equipment
- Faculty
  - Scheduling
  - Administration
  - Instructors
- Students
  - Scheduling
  - Academic calendars
- Session
  - Presentation length
  - Repetition
  - Applicability





# Successes

- Institutions
  - NEOMED
  - University of Akron
  - Cleveland State University
  - Community Support Services
- Session
  - Four disciplines integrated
  - Group discussion
- Students
  - Integrated care exposure
  - Psychiatry exposure
- Faculty
  - Fulfillment and motivation
- Evaluations
  - Feedback



# Opportunities

- Fully incorporate social work students
- Explore addition of other disciplines
- Improve evaluations and evaluation process
- Serve as a model for others



# Summary

- Patients with severe and persistent mental illness require both primary care and mental health care
- Case conference provides students with an interprofessional opportunity to care for patients with mental illness as well as exposure to an integrated care model
- Positive student and faculty feedback regarding session and plans to integrate other disciplines in the future



# Questions

Email: [cpaxos@neomed.edu](mailto:cpaxos@neomed.edu)



# References

- Colton CW, Manderscheid RW. Congruencies in increased mortality rates, years of potential life lost, and causes of death among public mental health clients in eight states. *Prev Chronic Dis* [serial online] 2006. [www.cdc.gov/pcd/issues/2006/apr/05\\_0180.htm](http://www.cdc.gov/pcd/issues/2006/apr/05_0180.htm).
- Goff DC, Sullivan LM, McEvoy JP, Meyer JM, Nasrallah HA, Daumit GL, et al. A comparison of ten-year cardiac risk estimates in schizophrenia patients from the CATIE study and matched controls. *Schizophr Res* 2005;80(1):45-53.
- National Association of State Mental Health Program Directors Medical Directors Council. Morbidity and mortality in people with serious mental illness. 2006. [www.nasmhpd.org](http://www.nasmhpd.org). Accessed September 2, 2015.